

Pollinator Patchwork

Designed by Resource Central, inspired by an original design from Julie Hauser of Indigo Landscape Design



Calling all pollinators! This garden is a colorful patchwork of blooms specially designed to feed and host local pollinators like bees and butterflies. You'll love the color palette of this garden with purple, red, yellow, and white blooms. This rainbow of color pops against the flowing foliage of the grey-green Powis Castle Sage and tall, bright-green Maiden Grass. Pollinator Patchwork also offers our higher altitude gardeners a great option.

- Full sun exposure (minimum of 6 hrs of direct sun per day)
- Planting maps cover 72 sq. ft.
- Blooms late spring to fall
- Low water needs
- Hardiness maximum of 8,000 ft.

Individual Plant Information

AUTUMN JOY STONECROP - *Sedum* 'Autumn Joy'

QTY. 2



An umbrella of flowers changes from soft pink in August to a coppery-bronze seedhead in November, atop pale green, succulent-like leaves.

- Mature height 18-24"
Mature spread 12-18"
- Full sun
- Low water needs
- Blooms late summer to fall
- Attracts bees, butterflies
- Resists deer, rabbits

CARE: Older plants tend to split in the center if not divided. To keep the plant smaller and prevent it from flopping over, prune the tips 6-8" in late spring (this will also delay flowering).

BLUE SALVIA - *Salvia nemorosa* varieties

QTY. 2



Boasts flowers that spike up in tall stalks of bright violet flowers clumped up and down the stem. The bunches of flowers created are so dense, they present a solid wall of color in gardens.

- Mature height 18-24"
Mature spread 12-18"
- Full sun
- Low water needs
- Blooms summer
- Attracts bees, butterflies
- Resists deer, rabbits

CARE: This hardy plant is not fussy about soil and flourishes in full sun and low amounts of water.

KANNAH CREEK® SULPHUR FLOWER - *Eriogonum umbellatum* 'Kannah Creek®'

QTY. 1



A cultivar of the Colorado native known for its durability and its masses of bright yellow flowers. A low, leafy evergreen that boasts a pile of green coins in spring, yellow pom-poms in summer, orange heads in fall, and blood-red leaves in winter.

- Mature height 6-12"
Mature spread 12-24"
- Full sun
- Very low water needs
- Blooms early to midsummer
- Attracts bees, butterflies, hummingbirds
- Resists deer

CARE: Adaptable to a wide range of growing conditions. Once established, only needs occasional watering to grow and flower successfully.

MAIDEN GRASS - *Miscanthus sinensis* 'Gracillimus'

QTY. 2



Creamy white, feathery seed plumes stand erect over a broad clump of slender rich green blades with a white rib running down the center of each.

4



Mature height 4-5'
Mature spread 4-5'



Full sun



Medium water needs



Blooms late summer to fall



Attracts birds



Resists deer



CARE: Should be left standing in the winter to protect roots. Prefers well-draining soil.

MESA RED BLANKET FLOWER - *Gaillardia aristata* 'Mesa Red'

QTY. 1



Large, entirely wine-red flowers stand above a dense clump of thick, hairy, grayish-green foliage. A great cut flower for decoration.

5



Mature height 15-18"
Mature spread 18-24"



Full sun



Low water needs



Blooms midsummer



Attracts bees, butterflies



CARE: Blanket Flowers appreciate a bit of pampering the first season, and then take off on their own. Avoid planting in rich, moist soils, which can make the plants floppy and shorten their life span. Once established, it is very low-maintenance, adaptable, and easy to grow.

PINELEAF PENSTEMON - *Penstemon pinifolius*

QTY. 2



This low, creeping penstemon features tubular, scarlet-orange flowers with yellow throats. The prolific blooms rest atop soft, green needle-like foliage, covering the plant throughout the mid-summer months.

6



Mature height 6-8"
Mature spread 12-15"



Full sun



Low water needs



Blooms midsummer



Attracts butterflies, hummingbirds



Resists deer, rabbits



CARE: Penstemon varieties prefer not to be overcrowded and prefer maximum heat and sun exposure. Avoid enriching the soil around these finicky plants — it will shorten their life span. This semi-evergreen can be slow to establish, so be sure to weed around it regularly to improve establishment.

POWIS CASTLE SAGE - *Artemisia* 'Powis Castle'

QTY. 1



Its soft feathery leaves create beautifully distinct dome-like mounds, and it is valued for its aromatic leaves, delightful texture, and vigorous growth.

7



Mature height 2-3'
Mature spread 2-3'



Full sun



Low water needs



Blooms summer



Attracts bees



Resists deer



CARE: This plant benefits from well-drained soils. Crown rot may occur if soil is too moist or slow draining. Spreads by rhizomatous roots so you may consider hemming it in upon planting. When cutting back in spring or fall, be sure not to cut into old wood. Find where the buds start and do not cut below that point.

PURPLE CONEFLOWER - *Echinacea purpurea*

QTY. 3



Purple, drooping ray florets surround a characteristic spiny and brownish central disk, and dance atop stiff, coarse stems throughout the summer months.

8



Mature height 2-3'
Mature spread 18-24"



Full sun



Low water needs



Blooms mid to late summer



Attracts bees, birds, butterflies



CARE: Low-maintenance perennial that will grow easily in average, well-drained soil. Tolerant of drought, heat, and humidity.

ROCKY MOUNTAIN COLUMBINE - *Aquilegia coerulea*

QTY. 2



The Colorado state flower! It is noted for its large, rich violet flowers with white centers and long spurs mounted on arching stems over blue-green foliage.

9



Mature height 18-24"
Mature spread 12-18"



Full sun to filtered shade



Medium water needs



Blooms late spring to summer



Attracts bees, birds, butterflies



Resists deer, rabbits



CARE: Avoid heavy, soggy soil. Division is not recommended; mature plants do not like to be disturbed. If foliage becomes ragged during high heat, cut foliage back to 3 inches above ground and new leaves will grow in.



A bushy, multi-branched clump with fine, daisy-like flowers that are violet to purple during early summer to fall. Slender, dark green leaves are smooth to the touch.

- Mature height 2-4'
Mature spread 15-24"
- Full sun
- Low water needs

- Blooms late summer to fall
- Attracts bees, butterflies

CARE: This native plant will be easy to take care of. It will self-propagate by its non-aggressive rhizomatous roots.



Fleshy, blue-green leaves on branched stems create bushy, slightly sprawling clumps. Large fragrant clusters of tiny white flowers attract butterflies.

- Mature height 2-3'
Mature spread 18-24"
- Full sun
- Low water needs

- Blooms summer
- Attracts bees, butterflies
- Resists deer, rabbits

CARE: This long-lived perennial will thrive in average or poor soils with good drainage. Once established, it is drought tolerant. Can become weedy if left to self-seed!

Plant Maintenance by Season

MAINTENANCE TASKS

PLANT

SPRING (AFTER FIRST GROWING SEASON)

Cut back old growth to a few inches before new growth begins to show.

Kannah Creek® Sulphur Flower, Maiden Grass, Mesa Red Blanket Flower, Pineleaf Penstemon, Powis Castle Sage, Purple Coneflower, Rocky Mountain Columbine, Smooth Aster

Divide mature plants in early spring every 3 years, as needed.

Autumn Joy Stonecrop, Blue Salvia, Maiden Grass, Mesa Red Blanket Flower, Pineleaf Penstemon, Purple Coneflower

SUMMER

Water sparingly once established.

Kannah Creek® Sulphur Flower

Deadhead spent flowers to encourage new blooms, minimize self-seeding and/or encourage compact growth.

Autumn Joy Stonecrop, Blue Salvia, Mesa Red Blanket Flower, Rocky Mountain Columbine, White Valerian

FALL

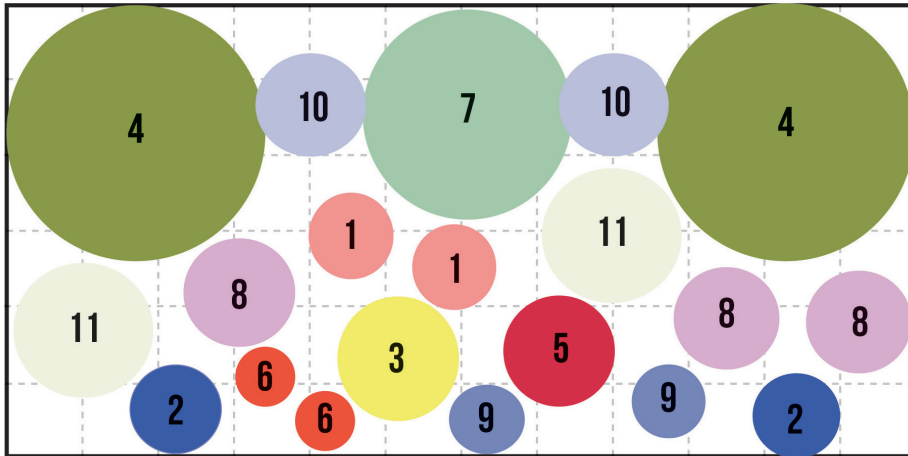
Leave last round of blooms to self-seed and/or to provide food for birds.

Autumn Joy Stonecrop, Purple Coneflower, Rocky Mountain Columbine

Deadhead to prevent self-seeding and spreading.

White Valerian

Plant-by-Number Design Suggestions

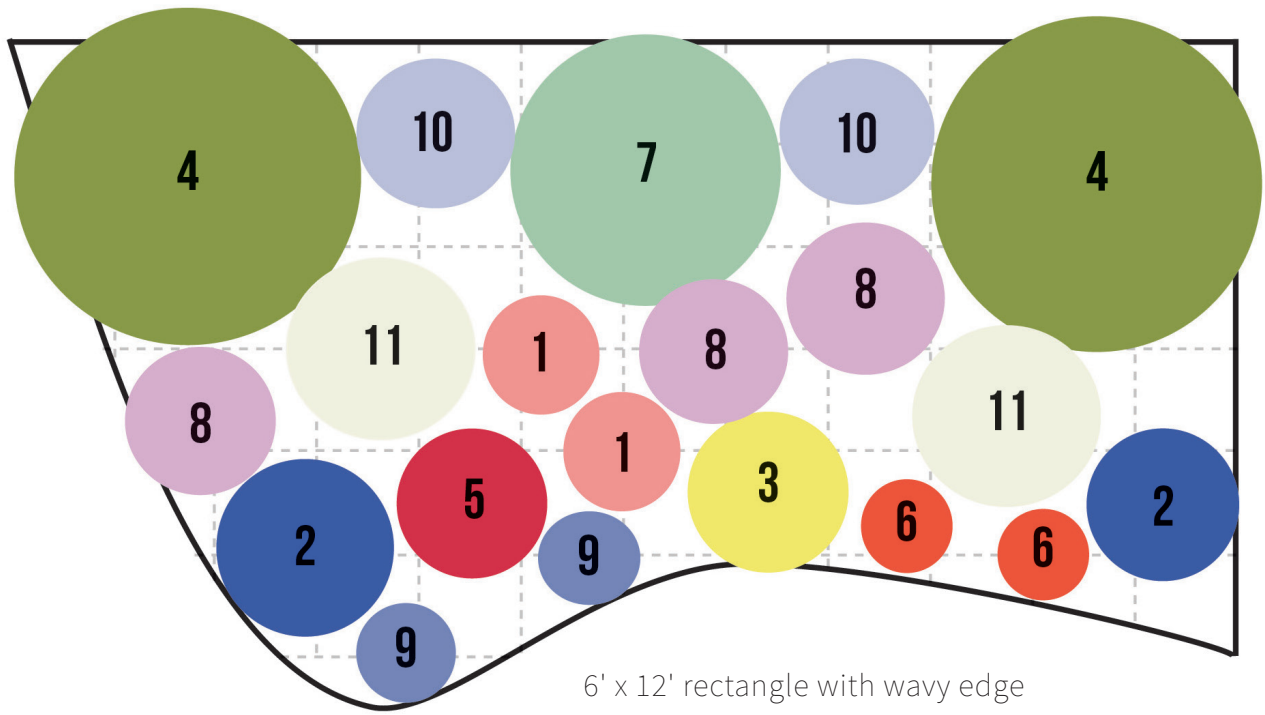


6' x 12' rectangle
SUGGESTED FRONT SIDE OF GARDEN

Key

1. Autumn Joy Stonecrop (Qty. 2)
2. Blue Salvia (Qty. 2)
3. Kannah Creek® Sulphur Flower (Qty. 1)
4. Maiden Grass (Qty. 2)
5. Mesa Red Blanket Flower (Qty. 1)
6. Pineleaf Penstemon (Qty. 2)
7. Powis Castle Sage (Qty. 1)
8. Purple Coneflower (Qty. 3)
9. Rocky Mountain Columbine (Qty. 2)
10. Smooth Aster (Qty. 2)
11. White Valerian (Qty. 2)

*1 box = 1 square foot
Maps reflect bloom or showy
foliage color.*



6' x 12' rectangle with wavy edge
SUGGESTED FRONT SIDE OF GARDEN